

# NORSEL TEXTILMASCHINEN AG

 ([Chinese version](#))

[On Fabric Labeling System for Piece Tracking through all Textile Processes](#)

[Norsel AG.pdf \(= This web site as PDF-document\)](#)

[NEW : Thermo transfer printer](#)

[Representatives](#)



---

Palmenstrasse 28 ··· Postfach 1838 ··· CH-8280 Kreuzlingen, Switzerland

Tel. +41 (0) 71-6726224 ··· Fax. +41 (0) 71-6726225

e-Mail: [norsel@norsel.com](mailto:norsel@norsel.com)

---

Info: [norsel@norsel.com](mailto:norsel@norsel.com)

[Back to previous page](#)

---

NORSEL AG  
on trade  
fairs:



Feb 13-16, 2011  
Dhaka,  
BANGLADESH



ITMA 2011  
Sep 22-29, 2011  
Barcelona,  
SPAIN



June 12-16, 2012  
Shanghai, CHINA

# NORSEL TEXTILMASCHINEN AG

[Click on the pictures to get a larger image](#)

## Applications

Self-adhesive labels for yarn cones and dyeing.



On fabric labeling, from grey to finished goods, to fabric made out of natural and man made fibers and mixtures as woven, circular-warp-knitted, raschel, embroidery and nonwoven goods.



## Label properties

• Resistant to all kinds of bleaching agents, textilesolvents, desizing, milling/fulling, carbonising, mercerising and dyeing.

## Equipment consists of:

### Handpress for label attachment

• Sealing surface 60x70mm or 60x100mm • adjustable sealing pressure through screw in grip • electrical-shock protection-fuser • control box with display for working temperature • temperature range 0-250°C +-2°C electronical controlled • hand press with balance suspension attachment • total weight 4.5 kg , hand press weight 1.7 kg • dimension LxWxH for hand press 300x70x90mm. • Power supply 0.2kW 220VAC



### Handpress for label attachment with spring cable drum

• Sealing surface 6x7cm or 6x10cm • adjustable sealing pressure through setting screw in grip • two side heated • temperatur range 0-250°C • control box with working temperature display and electrical shock protection fuse • spring cable drum with 7m cable • telescope ceiling suspension attachment • power supply 220V 6A 50/60Hz • Weight 8,4 kg • LxWxH 36x30x150cm



### • Manual label table press

• Two side heated press with sealing surface 10x15cm • Working temperature display and second display for setting of temperature and sealing time • End of sealing time buzzer • Temperature range 0-400°C • Timer range 0 sec to 4 hours • Powersupply 220V 6A 50/60Hz • Weight 12,3 kg • Dimensions l x w x h 37 x 20 x 56cm



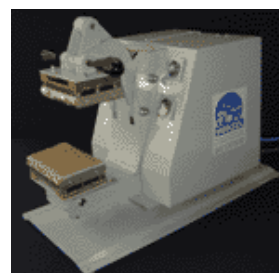
### • Push button semiautomatic press

• Two side heated press with sealing surface 10 x 15 cm • Working temperature display and second display for setting of temperature and time • Two hand operated with electronic safety control • Automatic opening of the press after expiry of time • Adjustable sealing pressure 0-8 bar • Timer range 0 sec to 4 hours and temperature range 0-400°C • Power supply 220V 6A 50/60Hz and compressed air 5-10 bar • Weight 28,5 kg • Dimensions l x w x h 45 x 38 x 53 cm



### • Semi-automatic labelling press

• Hand operated • Electronically controlled heating of both lower and upper plates • Temperature range: 0-300° Celsius • Sealing time: 0-12 seconds, automatic opening after expiry of timer • Sealing surface: 100x150mm • Dimensions: 600 x 300 x 460 mm • Weight: 33.6 kg • Electrical data: 0.75 kW , 220-240 VAC • Air consumption: 5 bar .



### • Table press for label sealing

• Halfautomatic foot operated with finger safety bar • temperature range 0-300°C • two separate heated plates • temperature regulation by 200°C +-2°C • two timers for sealing and for heatsetting of 100% man made fibers before sealing • timer range 0-12 seconds • lower sealing plate with pinframe • triple pistonrods for uniform sealing by high temperatures and short sealing time • adjustable sealingpressure 0-8 Bar • Dimension LxWxH 330x300x740mm. • power consumption 0.875 kW 100-120/220V • weight 35 kg



### • Swingarm press

• for inspection machines to be mounted on left or right hand side of the inspection machine frame • two piece arm with bracket and diskbracket for adjustment of angle of sealinghead to inspection surface. • Two hand operated • sealing surface 100x150mm • temperature range 0-300°C • two separate heated plates • temperature regulation by 200°C +-2°C • timer with range 0-12



seconds • lower sealing plate with pinframe • triple pistonrods for uniform sealing by high temperatures and short sealing time • adjustable sealing pressure 0-8 Bar • Dimension LxWxH 1860x190x380mm. • power consumption 0.875 kW 100-120/220V • weight 75 kg

#### • **Pendulum press**

• for inspection machines to be mounted from the top of the inspectionmachine on left or right hand side • two piece arm with bracket and diskbracket for adjustment of sealing head angle to the inspection surface. • Two hand operated • sealing surface 80x80mm • temperature range 0-300°C • two heated plates • temperature regulation by 200°C +-2°C • timer range 0-12 seconds • lower sealing surface with clamp for holding label in position by sealing • adjustable sealing pressure 0-8 Bar • Power consumption 0.5 kW 100-120/220VAC • weight 40 kg



#### • **Thermotransfer printer & cutter**

• Resolution 203 dpi • Speed 50 - 200mm/sec • Working width 30-108mm • Maximum label roll diameter 208mm and inside diameter 25.4 to 76mm • Maximum inkfilm length 600m wound on 25.4mm Ø tube • Barcode and letter graphic font with codes as Code39, Code128, Interleaved 2 of 5, EAN 8/13, Data Matrix and further more • Label sensors as see through and reflective • Interfaces: parallel, USB and serial • Dimensions: 270 x 308 x 505mm l x h x d • Weight: 15 kg • Power supply 220/110V 6A 50-60Hz • Options: Internal Ethernet print server •



#### • **Thermotransfer printer for heavy label material**

•Optional with label cutter or label perforator •Metal cabinet with plastic dust cover •working width 30-104mm •speed 50-250mm/sec •resolution 203 dpi •interfaces USB,serial and Ethernet •sensors for label eyegap and label black-marks and for printing position •barcode and letter graphic font •power supply 110/220V 6A 50/60Hz •weight 10 Kg •dimensions LxWxH 50x25x27cm •



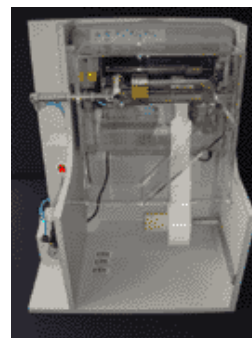
#### • **Desktop thermotransfer printer with guillotine cutter**

• Working width 30-108mm • Speed 50-175mm/sec • Resolution 203 dpi • Interfaces USB , serial & parallel • On board Ethernet • ZPL emulation/TSPL-EZ/Monotype font • 8MB SDRAM , 4MB Flash + additional Flash through SDHC card reader • Powersupply 220-110V/6A/50-60Hz • Dimensions LxWxH 50x23x19cm • Weight 3.5kg



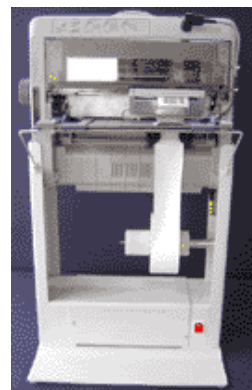
**Label printing and cutting machine**

• Working width 50 - 120 mm • Cutting length 0 - endless • pneumatic circular driven cutter for thin to thick and for label material with additional protection film • Print mode ESC/P or IBM emulation • Interface Centronics parallel • Dimensions LxWxH 570x460x740 mm • Powersupply 60 W 100 - 120/220 VAC, 50 - 60 Hz • Weight 27 kg.



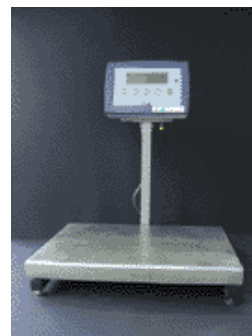
**Labelprinter with cutter**

• Working width 50 - 100 mm • Cutting length 0 - endless • Print mode ESC/P or IBM emulation • Interface Centronics parallel • Dimensions L x W x H 450 x 350 x 620 mm • Powersupply 60 W 100 - 120/220 VAC, 50 - 60 Hz • Weight 14 kg.



**Scale with platform**

• Electronical EU crowned scale with 52 x 40 cm stainless steel platform and stand • Display for net/tare • Weight 60 kg / 20 g • RS232C interface • Operating with Norsel LABEL Windows XP software for print of roll weight on Norsel labels • Power supply 220VAC 5 Watt 50-60 Hz • Dimensions 530 x 480 x 650 mm • Weight 16.7 kg.



**CCD Hand Held Barcode Reader**

• for reading of textile surface & plastic surface • reads low contrast and stained plus defect barcodes • Hand unit with bluetooth wireless transmitting up to a distance of 10m from the base station • Hand unit with accumulator for 16 hours operation • base station with re-charger of the accumulator • Interfaces: USB & Keyboard wedge for PC/Terminal • All common bar and dot codes are readable • Reading distance 2,5 to 61 cm and reading width 13 cm • Weight hand held unit 0.26 Kg Weight Base station 0.25 kg • Height hand held unit: 16.5 cm Height base station 7.9 cm •



**Accessories:**

**Label materials**

• Polyester woven hotcut • Polyester woven coated • Polyester woven hotmelt • Polyester woven hotmelt longline folded • Polyester woven hotmelt, prepunched labels on backing paper with tractor feed perforations

• Polyester nonwoven hotmelt • Polyester nonwoven hotmelt, prepunched labels with tractor feed perforations



• Nortex woven hotmelt • Nortex nonwoven hotmelt • Nortex paper hotmelt • Label protectionfilm • Plastic thin hotmelt • Plastic thinned hotmelt • Plastic medium hotmelt • Plastic thick hotmelt

### Label ink products for textile processing

• Ink ribbon cartridge for Norsel dot matrix printer/inkfilmrolls for thermotransfer printer with cutter

### • Software

• Stand-alone operation or in combination with already existing software • Label format editor • For barcodes and graphics / logos • Automatic import of weight from electronic scale • Automatic cutting device control • For thermotransfer printer and needle printer • Self-incrementing numbers function • Very fast operation • File transfer function

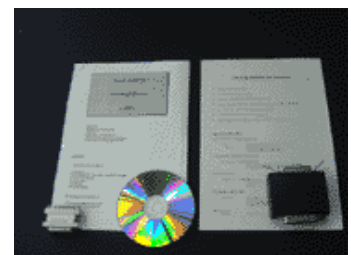


### Special hardware

• Twinax/Coax adapter for connection of printer to an AS400 mainframe computer.

### • Printer Controller

• Standard Centronics Interface • No external power required • Extended ASCII instruction set for NORSEL printer • Supports Barcodes EAN-8/13, 2/5IL, UPC-A/E, Code39, Code128, POSTNET • All control codes can be sent to the printer in plain text • Transparent. Other data flow remains unchanged • Simple change of the configuration (e.g. via Internet)





## **Applications**

**Self-adhesive labels for yarn cones and dyeing.**



**On fabric labeling, from grey to finished goods, to fabric made out of natural and man made fibers and mixtures as woven, circular-warp-knitt, raschel, embroidery and nonwoven goods.**



### **Handpress for label attachment**

**• Sealing surface 60x70mm or 60x100mm • adjustable sealing pressure through screw in grip • electrical-shock protection-fuser • control box with display for working temperature • temperature range 0-250°C +-2°C electronical controlled • hand press with balance suspension attachment • total weight 4.5 kg , hand press weight 1.7 kg • dimension LxWxH for hand press 300x70x90mm. • Power supply 0.2kW 220VAC**



### **Handpress for label attachment with spring cable drum**

**• Sealing surface 6x7cm or 6x10cm • adjustable sealing pressure through setting screw in grip • two side heated • temperatur range 0-250°C • control box with working temperature display and electrical shock protection fuse • spring cable drum with 7m cable • telescope ceiling suspension attachment • power supply 220V 6A 50/60Hz • Weight 8,4 kg • LxWxH 36x30x150cm**



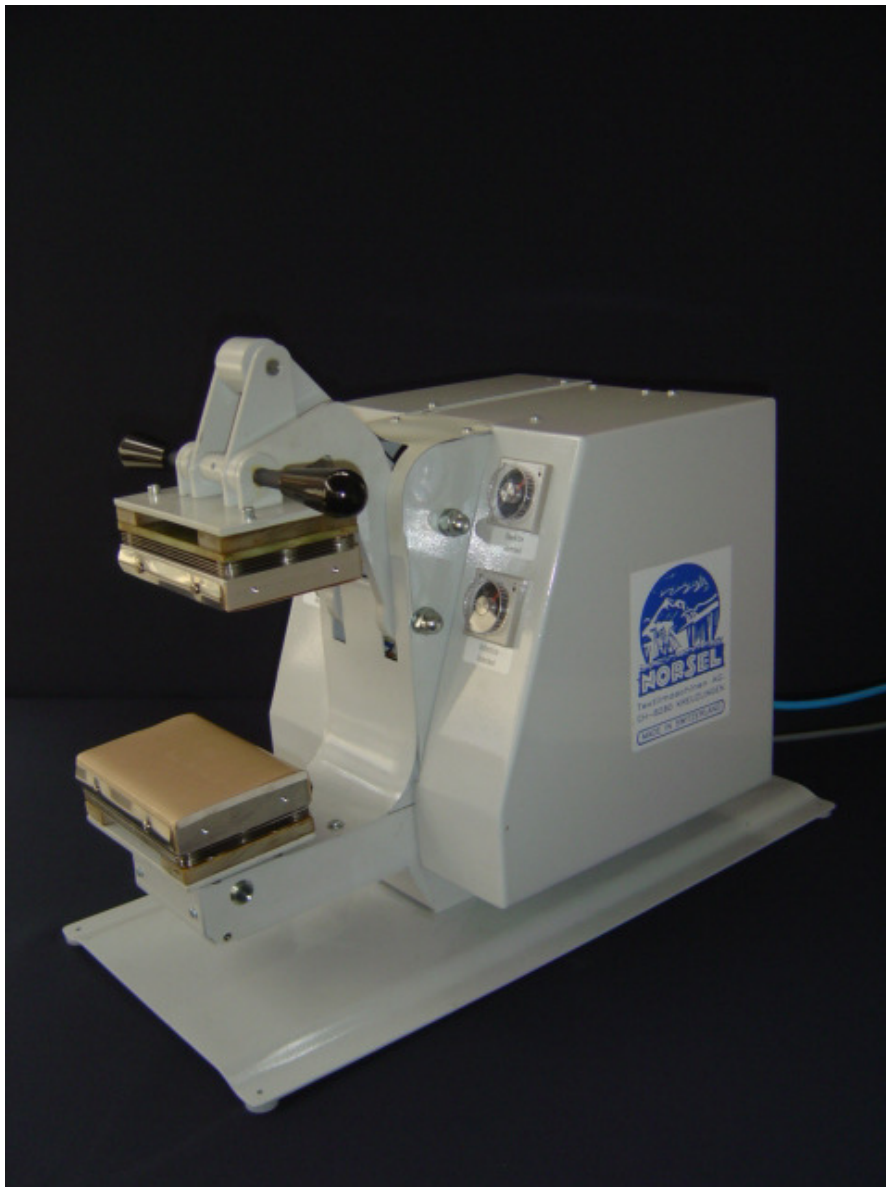
### **Manual label table press**

- Two side heated press with sealing surface 10x15cm • Working temperature display and second display for setting of temperature and sealing time • End of sealing time buzzer • Temperature range 0-400°C •
- Timer range 0 sec to 4 hours • Powersupply 220V 6A 50/60Hz • Weight 12,3 kg • Dimensions l x w x h 37 x 20 x 56cm



### **Push button semiautomatic press**

- Two side heated press with sealing surface 10 x 15 cm • Working temperature display and second display for setting of temperature and time • Two hand operated with electronic safety control • Automatic opening of the press after expiry of time • Adjustable sealing pressure 0-8 bar • Timer range 0 sec to 4 hours and temperature range 0-400°C • Power supply 220V 6A 50/60Hz and compressed air 5-10 bar • Weight 28,5 kg • Dimensions l x w x h 45 x 38 x 53 cm



### **Semi-automatic labelling press**

**• Hand operated • Electronically controlled heating of both lower and upper plates • Temperature range: 0-300° Celsius • Sealing time: 0-12 seconds, automatic opening after expiry of timer • Sealing surface: 100x150mm • Dimensions: 600 x 300 x 460 mm • Weight: 33.6 kg • Electrical data: 0.75 kW , 220-240 VAC • Air consumption: 5 bar .**



### **Table press for label sealing**

**• Halfautomatic foot operated with finger safety bar • temperature range 0-300°C • two separate heated plates • temperature regulation by 200°C +-2°C • two timers for sealing and for heatsetting of 100% man made fibers before sealing • timer range 0-12 seconds • lower sealing plate with pinframe • triple pistonrods for uniform sealing by high temperatures and short sealing time • adjustable sealingpressure 0-8 Bar • Dimension LxWxH 330x300x740mm. • power consumption 0.875 kW 100-120/220V • weight 35 kg**



### **Swingarm press**

**• for inspection machines to be mounted on left or right hand side of the inspection machine frame • two piece arm with bracket and diskbracket for adjustment of angle of sealinghead to inspection surface. • Two hand operated • sealing surface 100x150mm • temperature range 0-300°C • two separate heated plates • temperature regulation by 200°C +-2°C • timer with range 0-12 seconds • lower sealing plate with pinframe • triple pistonrods for uniform sealing by high temperatures and short sealing time • adjustable sealing pressure 0-8 Bar • Dimension LxWxH 1860x190x380mm. • power consumption 0.875 kW 100-120/220V • weight 75 kg**



### **Pendulum press**

- for inspection machines to be mounted from the top of the inspection machine on left or right hand side
- two piece arm with bracket and disk bracket for adjustment of sealing head angle to the inspection surface.
- Two hand operated
- sealing surface 80x80mm
- temperature range 0-300°C
- two heated plates
- temperature regulation by 200°C  $\pm$  2°C
- timer range 0-12 seconds
- lower sealing surface with clamp for holding label in position by sealing
- adjustable sealing pressure 0-8 Bar
- Power consumption 0.5 kW
- 100-120/220VAC
- weight 40 kg





• **Thermotransfer printer & cutter**

• Resolution 203 dpi • Speed 50 - 200mm/sec • Working width 30-108mm • Maximum label roll diameter 208mm and inside diameter 25.4 to 76mm • Maximum inkfilm length 600m winded on 25.4mm Ø tube • Barcode and letter graphic font with codes as Code39, Code128, Interleaved 2 of 5, EAN 8/13, Data Matrix and further more • Label sensors as see through and reflective • Interfaces: parallel, USB and serial • Dimensions: 270 x 308 x 505mm l x h x d • Weight: 15 kg • Power supply 220/110V 6A 50-60Hz • Options: Internal Ethernet print server •



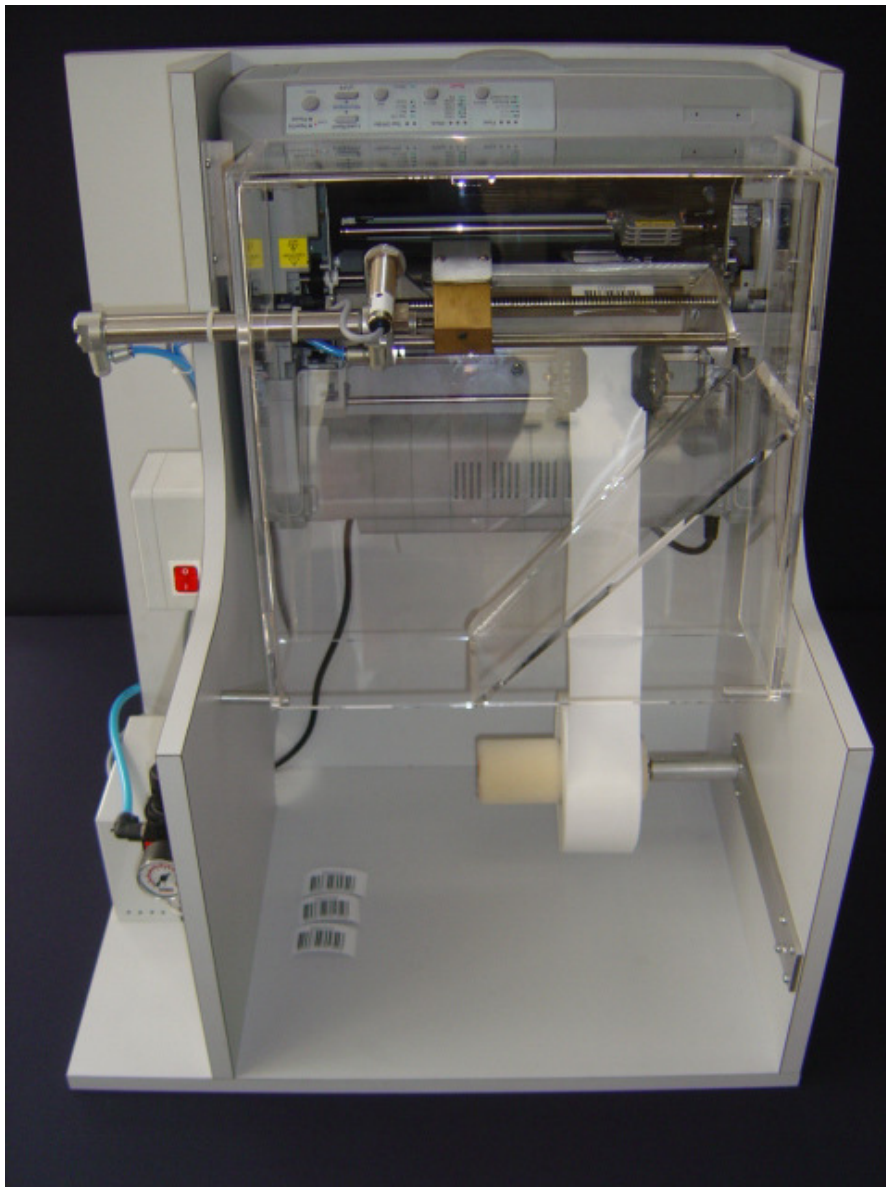
**Thermotransfer printer for heavy label material**

**•Optional with label cutter or label perforator •Metal cabinet with plastic dust cover •working width 30-104mm •speed 50-250mm/sec •resolution 203 dpi •interfaces USB,serial and Ethernet •sensors for label eyegap and label black-marks and for printing position •barcode and letter graphic font •power supply 110/220V 6A 50/60Hz •weight 10 Kg •dimensions LxWxH 50x25x27cm**



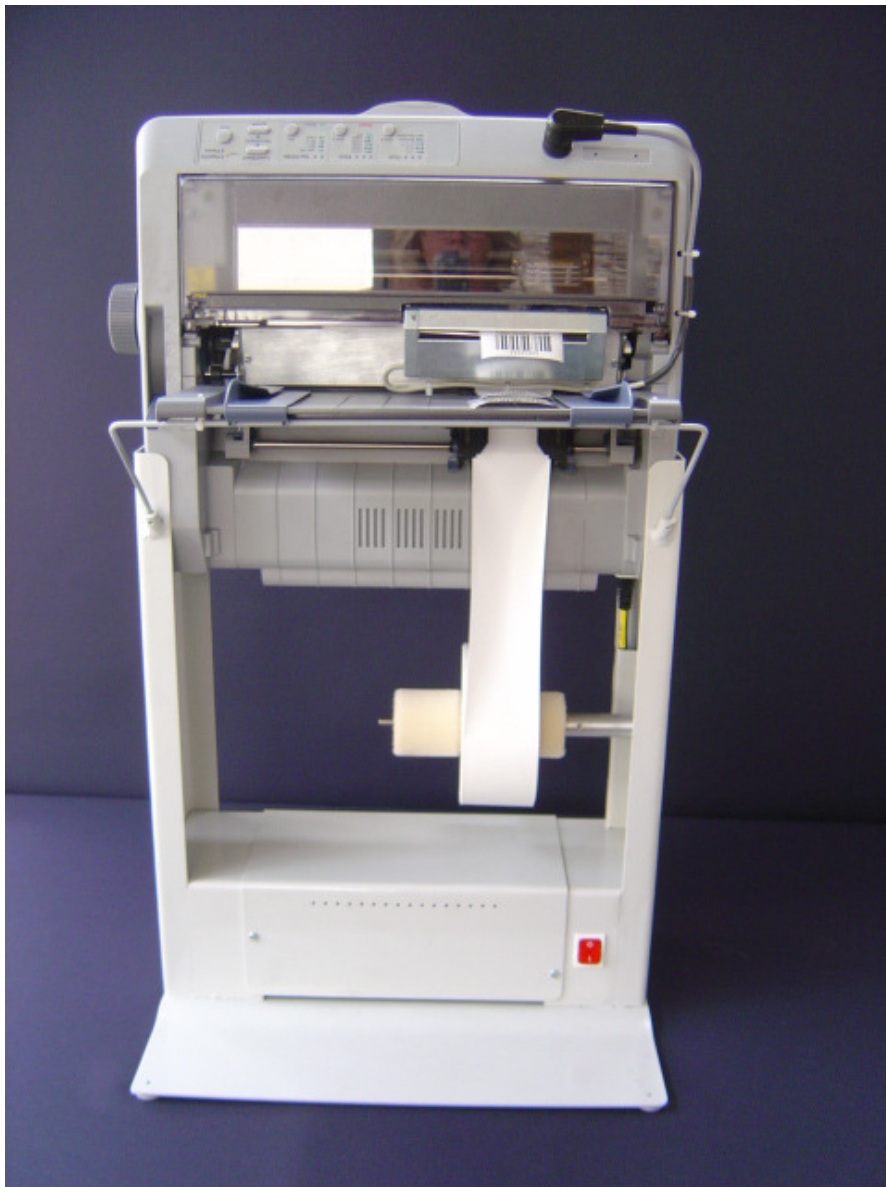
**Desktop thermotransfer printer with guillotine cutter**

• Working width 30-108mm • Speed 50-175mm/sec • Resolution 203 dpi • Interfaces USB , serial & parallel • ZPL emulation/TSPL-EZ/Monotype font • 8MB SDRAM , 4MB Flash + additional Flash through SDHC card reader • Powersupply 220-110V/6A/50-60Hz • Dimensions LxWxH 50x23x19cm • Weight 3.5kg



### **Label printing and cutting machine**

**• Working width 50 - 120 mm • Cutting length 0 - endless • pneumatic circular driven cutter for thin to thick and for labelmaterial with additional protectionfilm • Print mode ESC/P or IBM emulation • Interface Centronics parallel • Dimensions LxWxH 570x460x740 mm • Powersupply 60 W 100 - 120/220 VAC, 50 - 60 Hz • Weight 27 kg.**



**Labelprinter with cutter**

**Working width 50 - 100 mm • Cutting length 0 - endless • Print mode ESC/P or IBM emulation •**

**Interface Centronics parallel • Dimensions L x W x H 450 x 350 x 620 mm • Powersupply 60 W 100 - 120/220 VAC, 50 - 60 Hz • Weight 14 kg.**



### **Scale with platform**

- **Electronical EU crowned scale with 52 x 40 cm stainless steel platform and stand • Display for net/tare • Weight 60 kg / 20 g • RS232C interface • Operating with Norsel LABEL Windows XP software for print of roll weight on Norsel labels • Power supply 220VAC 5 Watt 50-60 Hz • Dimensions 530 x 480 x 650 mm**
- **Weight 16.7 kg.**



### **CCD Hand Held Barcode Reader**

**• for reading of textile surface & plastic surface • reads low contrast and stained plus defect barcodes • Hand unit with bluetooth wireless transmitting up to a distance of 10m from the base station • Hand unit with accumulator for 16 hours operation • base station with re-charger of the accumulator • Interfaces: USB & Keyboard wedge for PC/Terminal • All common bar and dot codes are readable • Reading distance 2,5 to 61 cm and reading width 13 cm • Weight hand held unit 0.26 Kg Weight Base station 0.25 kg • Height hand held unit: 16.5 cm Height base station 7.9 cm •**



### **Assesories:**

#### **Label materials**

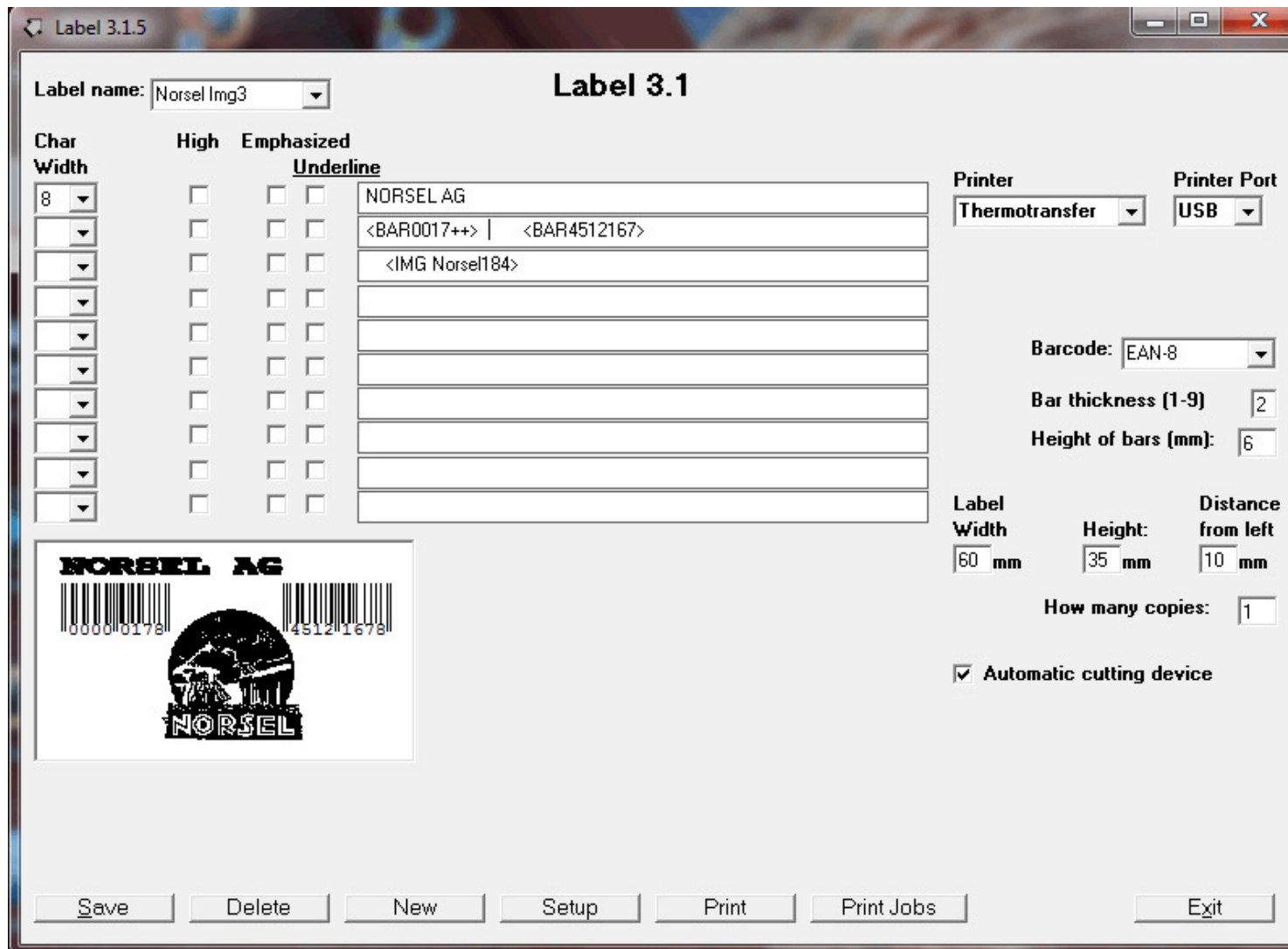
- Polyester woven hotcut • Polyester woven coated • Polyester woven hotmelt • Polyester woven hotmelt longline folded • Polyester woven hotmelt, prepunched labels on backing paper with tractor feed perforations
- Polyester nonwoven hotmelt • Polyester nonwoven hotmelt, prepunched labels with tractor feed perforations
- Nortex woven hotmelt • Nortex nonwoven hotmelt • Nortex paper hotmelt • Label protectionfilm • Plastic thin hotmelt • Plastic thinned hotmelt • Plastic medium hotmelt • Plastic thick hotmelt

#### **Label ink products for textile processing**

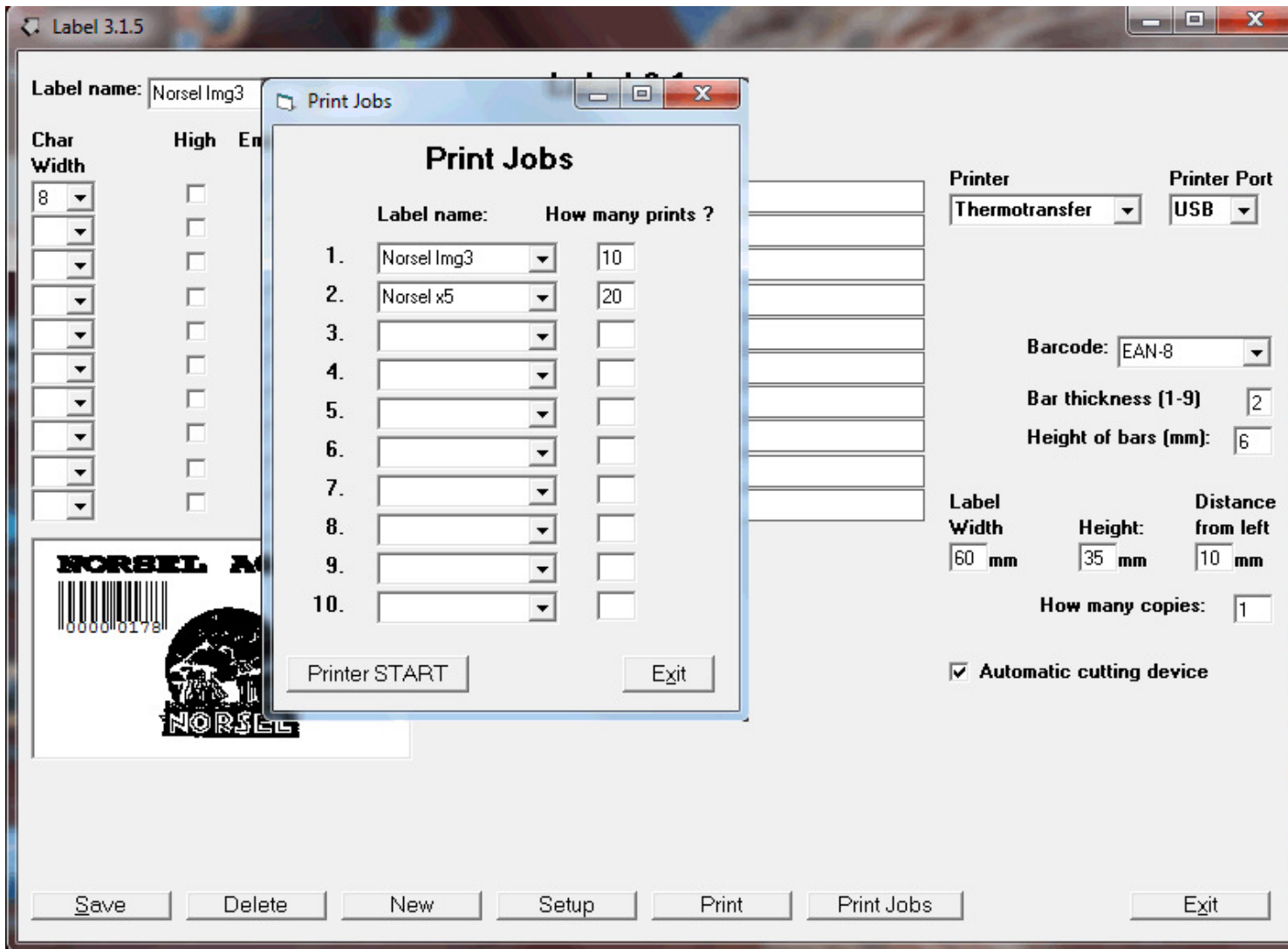
- Ink ribbon cartridge for Norsel dot matrix printer/inkfilmrolls for thermotransfer printer with cutter

# Labeling Software

## Easy to use Windows based program



- Stand-alone operation or in combination with already existing software
- Label format editor
- For barcodes and graphics / logos
- Automatic import of weight from electronic scale
- Automatic cutting device control
- For thermotransfer printer and needle printer
- Self-incrementing numbers function
- Very fast operation
- File transfer function
- With dongle protection
- Unlimited software update



- Print Jobs for Batch printing

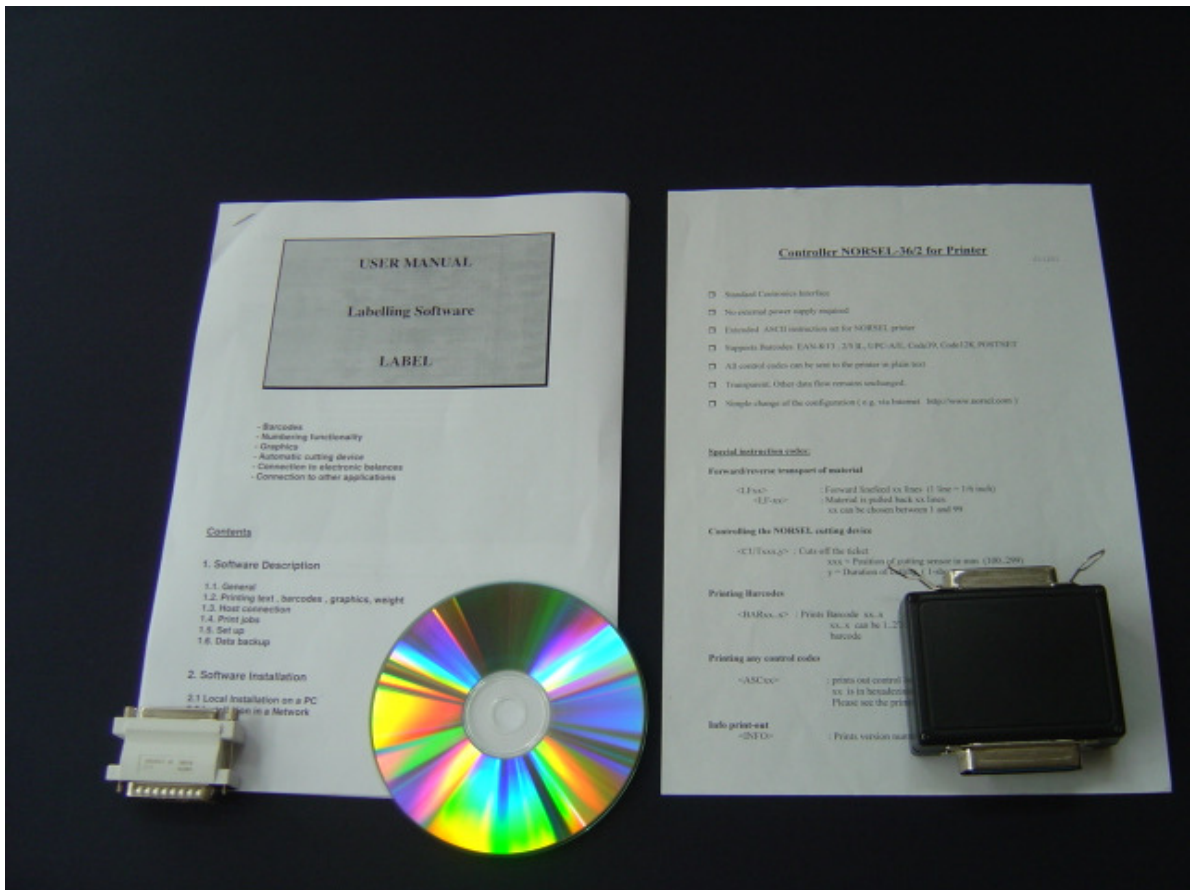
## Download

Click here [Label\\_Install.zip](#) to download the latest software version (7 MB).

( Please note, that you need a protection key (dongle) to run the software )

# Controller NORSEL-36/2 for Printer

- Standard Centronics Interface
- No external power required
- Extended ASCII instruction set for NORSEL printer
- Supports Barcodes EAN-8/13, 2/5IL, UPC-A/E, Code39, Code128, POSTNET
- All control codes can be sent to the printer in plain text
- Transparent. Other data flow remains unchanged
- Simple change of the configuration (e.g. via Internet)



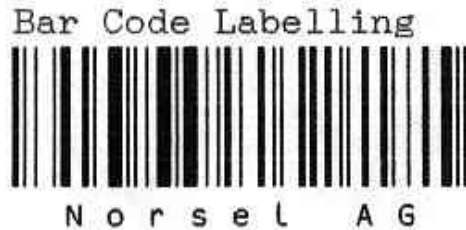
# Controller NORSEL-36/2 for Printer

A simple example , how to print bar codes with the Controller NORSEL-36/2 is the following:

**If you print this:**

Bar Code Labelling  
<BARNorsel AG>

**You will get this printout:**



**A list of other examples is shown below**

<LF5>	: Forward line feed 5 lines
<LF-12>	: Reverse line feed 12 lines
<CUT185,3>	: Cuts off ticket
<DEF A,02>	: Chooses barcode 2/5 IL
<DEF D,04>	: Sets the barcode height to 4 lines
<DEF F,03>	: Barcode is printed 3 times at the same position
<BAR123456>	: Prints out barcode "123456"
<ASC1B><ASC45>	: Activates enhanced print mode
<ASC1B><ASC0F>	: Activates condensed mode
<ASC1B><ASC57><ASC01>	: Activates double font width
<ASC1B><ASC77><ASC01>	: Activates double font height
<ASC1B><ASC2D><ASC01>	: Text is underlined
<ASC1B><ASC34>	: Activates italic print mode
<ASC1B><ASC47>	: Activates double print mode (not in NLQ-mode)

# Online Configuration of the Printer Controller

Select Barcode:  EAN-13       EAN-8       2/5 Interleaved       Code39  
 UPC-A       UPC-E       Code128       POSTNET

Width of Barcode

Width of white bars

Enhanced printing

Bar length

Add check digit

Add text under barcode

# Representatives of NORSEL AG



**ARGENTINA**

José Coo Importacion-Exportacion , Buenos Aires  
Email: [josecoo\\_hijos@ciudad.com.ar](mailto:josecoo_hijos@ciudad.com.ar)



**AUSTRALIA**

George Black Textile Products (NSW) Pty. Ltd. , Sydney  
Email: [gbtp\\_nsw@optusnet.com.au](mailto:gbtp_nsw@optusnet.com.au)  
[www.gbtg.com](http://www.gbtg.com)



**BANGLADESH**

ASSL TEXTILE , Mohakhali, Dhaka  
Email: [info@assltextile.com](mailto:info@assltextile.com)  
[www.assltextile.com](http://www.assltextile.com)



**BELGIUM**

Le Clair & Meert nv  
Email: [info@leclairmeert.be](mailto:info@leclairmeert.be)  
[www.leclairmeert.be](http://www.leclairmeert.be)



**BRASIL**

TENCOR LTDA , Blumenau / Santa Catarina  
Email: [info@tencor.com.br](mailto:info@tencor.com.br)  
[www.tencor.com.br](http://www.tencor.com.br)



**CANADA**

NOVATEX MACHINERY INC. , Montreal  
Email: [novatex.machinery@sympatico.ca](mailto:novatex.machinery@sympatico.ca)



**CHINA**

GROUP PROSPECT Co. LTd , Hong Kong  
Email: [info@groupprospect.com.hk](mailto:info@groupprospect.com.hk)  
<http://www.groupprospect.com.hk>



**COLOMBIA**

FUKUTEX LTDA , Envigado - Antioquia  
Email: [gerencia@fukutex.com](mailto:gerencia@fukutex.com)  
[www.fukutex.com](http://www.fukutex.com)



**DEUTSCHLAND**

EDV Consulting & Organisation , Mitterfels  
Email: [JS@ecoschielke.de](mailto:JS@ecoschielke.de)  
[www.ecoschielke.de](http://www.ecoschielke.de)



**REPULICA DOMINICANA**

Chemotex S.A. , Caracas , Venezuela  
Email: [correo@chemotex-sa.com](mailto:correo@chemotex-sa.com)



**EGYPT**

Bon Marché , Nasr City - 11817 , Cairo  
7, Hosny Ahmed Khalaf st,  
Off Makram Ebeid street,  
Phone: ++20 2 2271 8901 , Fax: ++20 2 2271 7804  
Mobile: ++20 100 1428602 and ++20 100 1627013  
Email: [s.saleh@bonmarche.com.eg](mailto:s.saleh@bonmarche.com.eg)  
[www.bonmarche.com.eg](http://www.bonmarche.com.eg)



**ESPAÑA**

CHARLES SMALL AGENCIE DE , Esmeriz , Portugal  
Email: [chassmall@mail.telepac.pt](mailto:chassmall@mail.telepac.pt)



**FRANCE**

Augusto De Faria , Chalon sur Saône  
Email: [augusto.defaria@orange.fr](mailto:augusto.defaria@orange.fr)



**GUATEMALA**

MAPRIMAQ, S. A. , Guatemala Ciudad  
Email: [tex@maprimaq.com](mailto:tex@maprimaq.com)  
[www.maprimaq.com](http://www.maprimaq.com)



**HONDURAS**

MAPRIMAQ, S. A. , Guatemala Ciudad  
Email: [tex@maprimaq.com](mailto:tex@maprimaq.com)  
[www.maprimaq.com](http://www.maprimaq.com)



**INDIA (South)**

S.Annadurai , Tirupur  
Email: [duraisitra@yahoo.co.in](mailto:duraisitra@yahoo.co.in)



**INDONESIA**

CV. Gosindo Abadi , 40266 Bandung  
Email: [samuelb@centrin.net.id](mailto:samuelb@centrin.net.id)



**IRELAND**

Robert S. Maynard Ltd , Wilmslow , England  
Email: [robert.s.maynard.ltd@dial.pipex.com](mailto:robert.s.maynard.ltd@dial.pipex.com)



**ISRAEL**

Niv Agencies - E.S. Ltd. , Hod-Hasharon 45317  
Email: [niv@niv-agencies.com](mailto:niv@niv-agencies.com)  
[www.niv-agencies.com](http://www.niv-agencies.com)



**ITALIA**

Riva SAS , 13814 Pollone (BI)  
Email: [info@rivasas.it](mailto:info@rivasas.it)



**MAROC**

Augusto De Faria , Chalon sur Saône , France  
Email: [augusto.defaria@orange.fr](mailto:augusto.defaria@orange.fr)



**MEXICO**

BARNATEX S.A. DE C.V.  
Email: [ventas@barnatex.com.mx](mailto:ventas@barnatex.com.mx)



**ÖSTERREICH**

EDV Consulting & Organisation , Mitterfels (D)  
Email: [JS@ecoschielke.de](mailto:JS@ecoschielke.de)  
[www.ecoschielke.de](http://www.ecoschielke.de)



**PAKISTAN**

ZONA Pakistan Ltd. , Karachi  
Email: [zonapak@cyber.net.pk](mailto:zonapak@cyber.net.pk)



**PERU**

NAOCHI PERU S.A. , Lima  
Email: [naochiperu@ddm.com.pe](mailto:naochiperu@ddm.com.pe)



**PORTUGAL**

CHARLES SMALL AGENCIE DE , Esmeriz  
Email: [chassmall@mail.telepac.pt](mailto:chassmall@mail.telepac.pt)



**EL SALVADOR**

PROYESA , San Salvador  
Email: [representaciones1@proyesa.com.sv](mailto:representaciones1@proyesa.com.sv)



**SOUTHERN AFRICA**

T/A MUTIMEX cc  
Email: [mutsaerts.rl@mutimex.co.za](mailto:mutsaerts.rl@mutimex.co.za)  
[www.mutimex.co.za](http://www.mutimex.co.za)



**TUNISIE**

Augusto De Faria , Chalon sur Saône , France  
Email: [augusto.defaria@orange.fr](mailto:augusto.defaria@orange.fr)

 **TÜRKIYE**

ETKI Tic. Ltd. Sti., Istanbul  
Email: [etki@etki.com.tr](mailto:etki@etki.com.tr)  
[www.etki.com.tr](http://www.etki.com.tr)

 **UNITED KINGDOM**

Robert S. Maynard Ltd , Wilmslow , England  
Email: [robert.s.maynard.ltd@dial.pipex.com](mailto:robert.s.maynard.ltd@dial.pipex.com)

 **VENEZUELA**

Chemotex S.A. , Caracas  
Email: [correo@chemotex-sa.com](mailto:correo@chemotex-sa.com)

---

Info: [norsel@norsel.com](mailto:norsel@norsel.com)

• [Back to previous page](#)

---

NORSEL AG  
on trade  
fairs:



Feb 13-16, 2011  
Dhaka,  
BANGLADESH



ITMA 2011  
Sep 22-29, 2011  
Barcelona,  
SPAIN



June 12-16, 2012  
Shanghai, CHINA